



General Election Opinion Poll

13th March 2016



Methodology and Weighting

- RED C interviewed a random sample of 1,006 adults aged 18+ by telephone between the 7th – 10th March 2016.
- A random digit dial (RDD) method is used to ensure a random selection process of households to be included – this also ensures that ex-directory households are covered.
- In an aim to better balance the sample achieved to capture elusive voters, we moved back to 50% of the sample being interviewed using an RDD landline sample, with the other half conducted using an RDD mobile phone sample. Quotas were also set within contact type.
- Interviews were conducted across the country and the results weighted to the profile of all adults.
- Due to the close nature of the recent General Election, voters were asked how they voted at that election and the results weighted exactly to the result. This ensures accuracy and allows us to directly compare future vote intentions recorded in this poll with the General Election result itself.
- Vote intention results are based on those who will actually go and vote weighted to voter turnout profiles, using a 10 point scale, where 1 is not at all likely and 10 is very likely, those rating 8 to 10 are included as being those who will definitely go and vote.
- The approach, sample size and quotas used assume a margin of error of + or – 3.5% when unlikely voters are excluded.
- In all respects the poll was completed to the opinion polling guidelines set out by both ESOMAR and AIMRO.

Voters Look for Secure Government

The results of the general election have left the country in a bit of a mess, with no one party dominating, and all of the parties suggesting they don't want to coalesce with the others. The opposition benches appear to be extremely attractive to most parties, as they aim to avoid being a junior party in any coalition.

The reality is that any combination of one of the larger parties, along with smaller parties and Independent voters can at best provide a minority government. As a result, only a Fine Gael and Fianna Fail coalition appears to provide any real prospect of a secure government, but currently both parties suggest this will not be easy and that the barriers may not be possible to overcome. At this stage both have pretty much ruled the grand coalition out, with Fianna Fail in particular suggesting it is not an option at all.

Fianna Fail argue that voters didn't vote for a grand coalition, and base this assertion on the fact that the party campaigned on a platform of not going into coalition with Fine Gael, and the premise that they see Fine Gael having "lost" the election by the people not giving them the support to easily return to power. This is a perfectly understandable argument, but does of course assume that it was the case that those who voted for Fianna Fail didn't want to see them in coalition with Fine Gael.

Whatever they felt at the time of voting, it is clear from our poll today that voters now do not hold much truck with the politicians not being able to sort out their differences and create some form of government. Well over half of all voters (54%) would prefer that the parties as they were elected compromise and form a stable government that will last 4-5 years. Another 20% would be prepared to see a minority government is formed to at least get us through the rest of the year, but that another general election may happen in the first 1-2 years. Just 1 in 4 (24%) want to see another election right now.

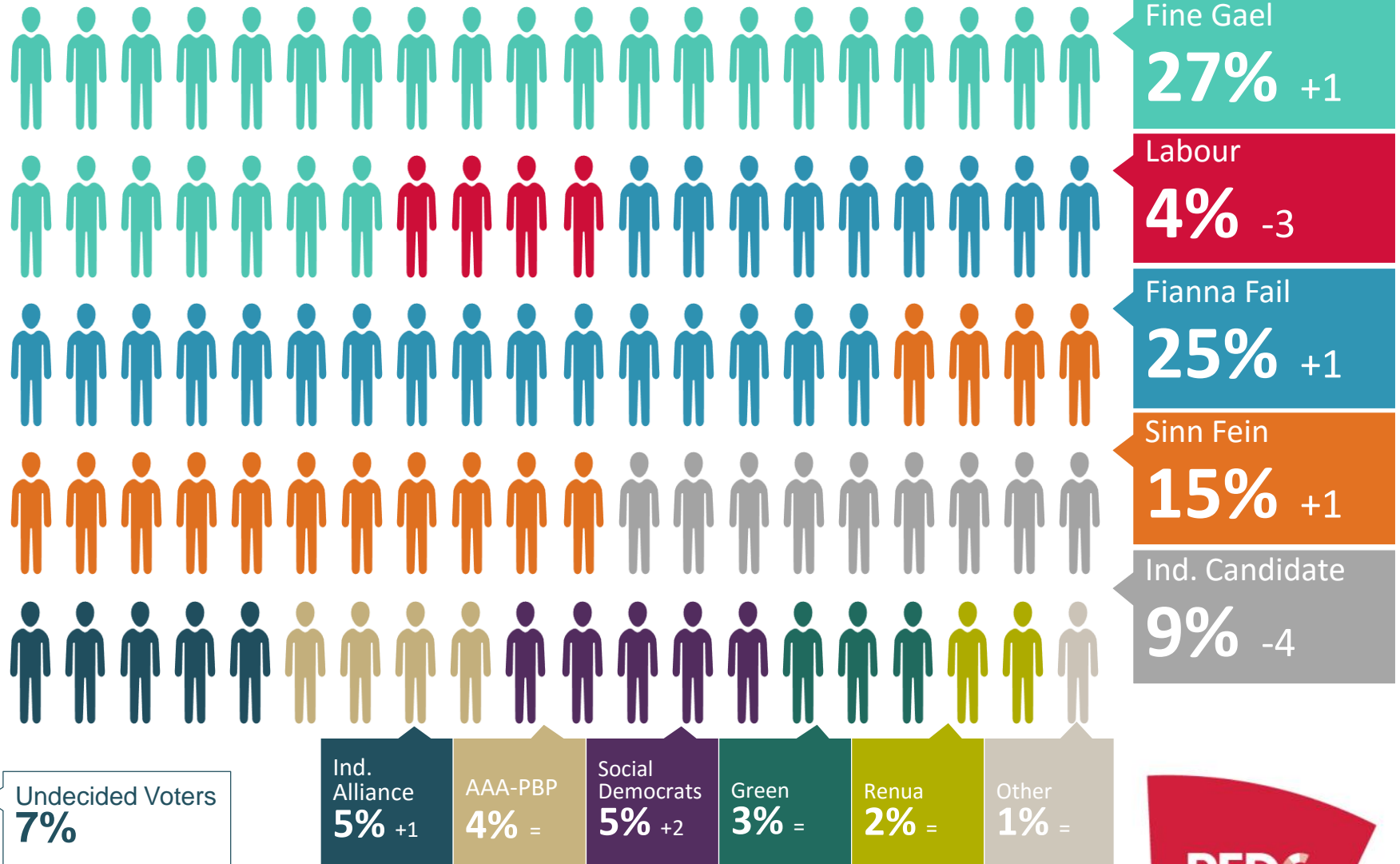
Where this gets even more compelling however is when it is looked at by party support at the General Election just over two weeks ago. Despite its protestations that its supporters don't want to see a grand coalition, almost 3 in 5 (57%) of all Fianna Fail voters believe that the parties should compromise and form a stable government. It is also clear that Fine Gael voters support this approach, with almost three quarters (72%) of their voters backing compromise and secure government for the next 4-5 years. It really also only appears to be Sinn Fein voters in any numbers who would like to see another General Election now.

The fact that any new General Election, based on this poll's findings, is also unlikely to see significant change in the fortunes of the parties and the overall outcome were it to be held, further backs up the argument that as far as voters are concerned... they have made their choices, and they expect the parties to now make compromises and form a stable government.

First Preference Vote Intention – 13th March 2016

If the general election was tomorrow which party or independent candidate do you think you would give your first preference vote to? (Past vote weighted)

(Base: All adults 18+ who will vote)



Fine Gael
27% +1

Labour
4% -3

Fianna Fail
25% +1

Sinn Fein
15% +1

Ind. Candidate
9% -4

Undecided Voters
7%

Ind. Alliance
5% +1

AAA-PBP
4% =

Social Democrats
5% +2

Green
3% =

Renua
2% =

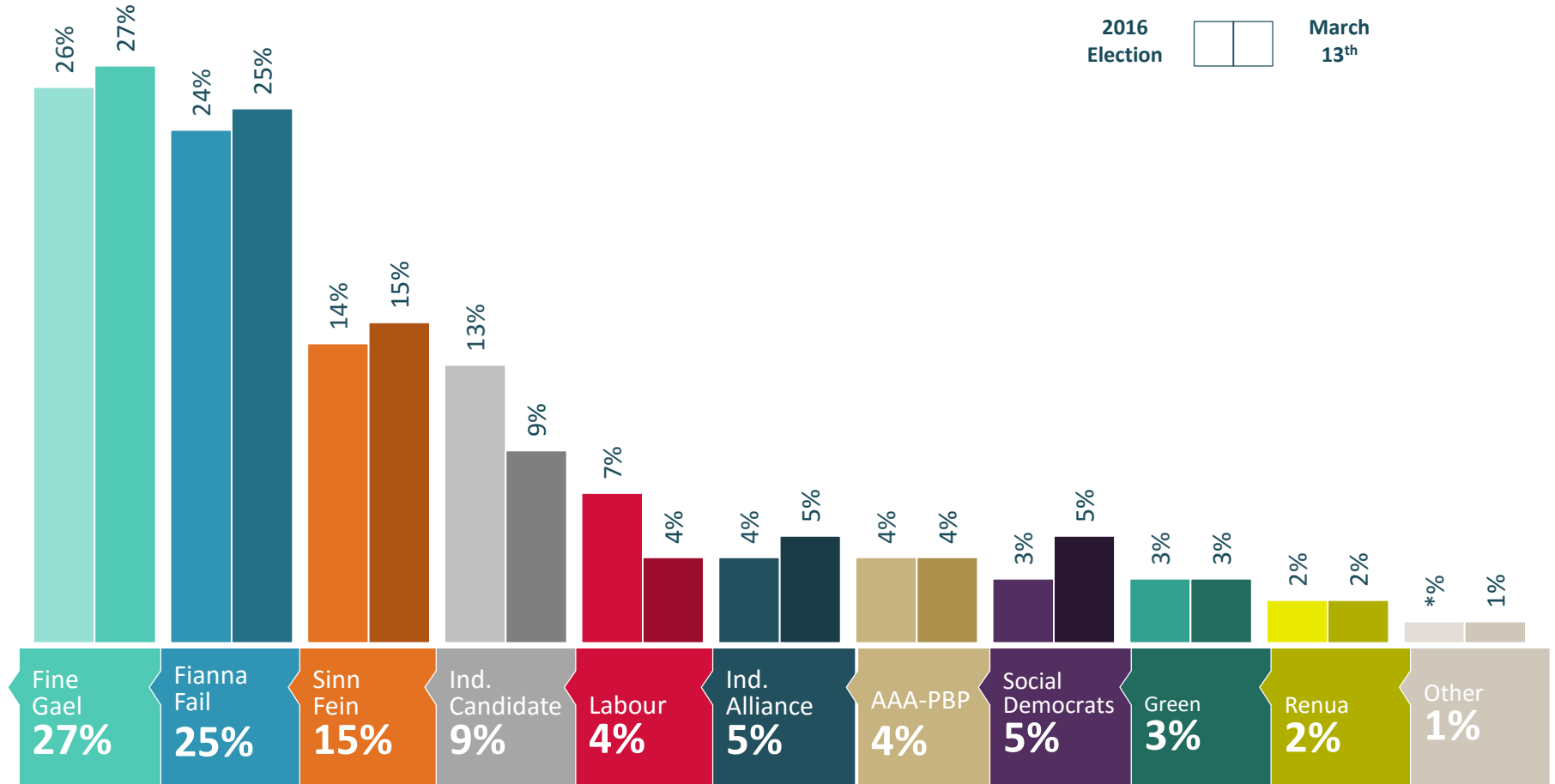
Other
1% =



First Preference Vote Intention – Feb '16

If the general election was tomorrow which party or independent candidate do you think you would give your first preference vote to? (Past vote weighted) + PROMPT If Independent Candidate for party.

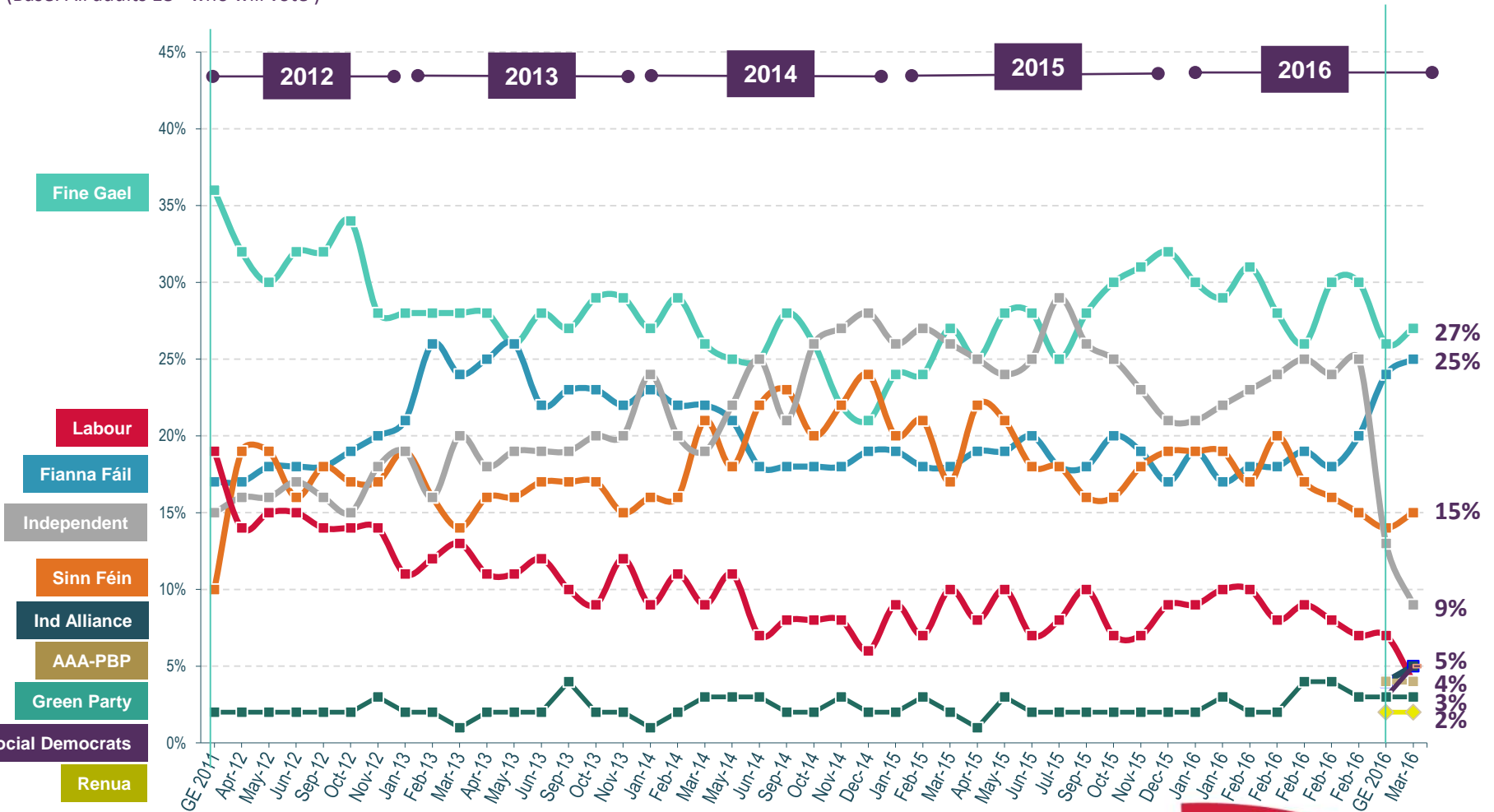
(Base: All adults 18+ who will vote)



First Preference Vote Intention – 2012-2016

If the general election was tomorrow which party or independent candidate do you think you would give your first preference vote to? (Past vote weighted)

(Base: All adults 18+ who will vote)



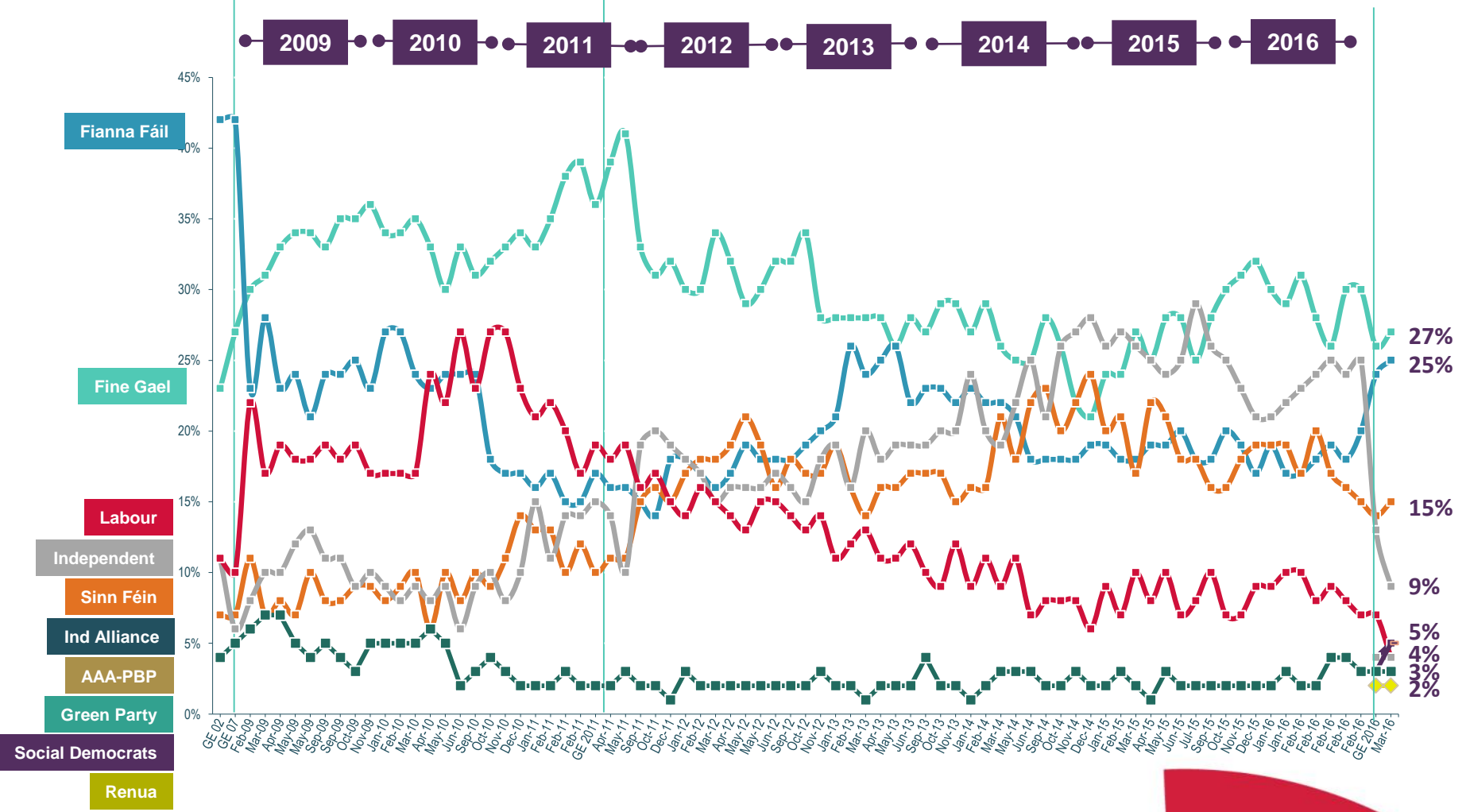
Note; From GE 2016 Onwards, 'Independents/Others' split out to show AAA-PBP, Social Democrats & Renua separately

REDC

First Preference Vote Intention – 2009 to 2016

If the general election was tomorrow which party or independent candidate do you think you would give your first preference vote to? (Past vote weighted)

(Base: All adults 18+ who will vote)



Note; From GE 2016 Onwards, 'Independents/Others' split out to show AAA-PBP, Social Democrats & Renua separately

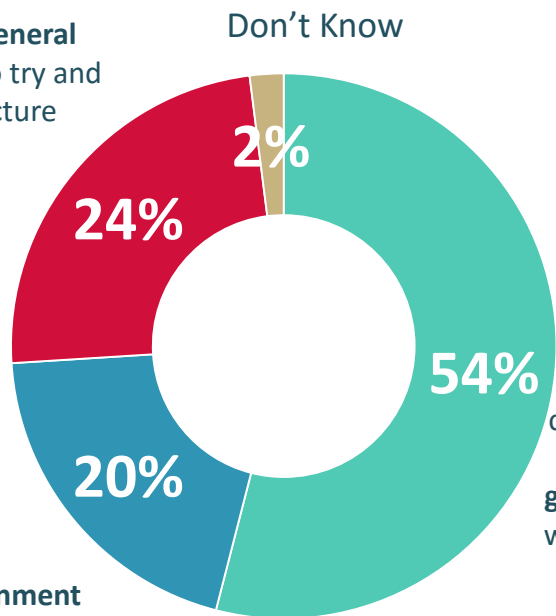


Preference in Terms of Formation of Next Government

Which of the following would you prefer to see happen in terms of the formation of government?

(Base: All Adults 18+)

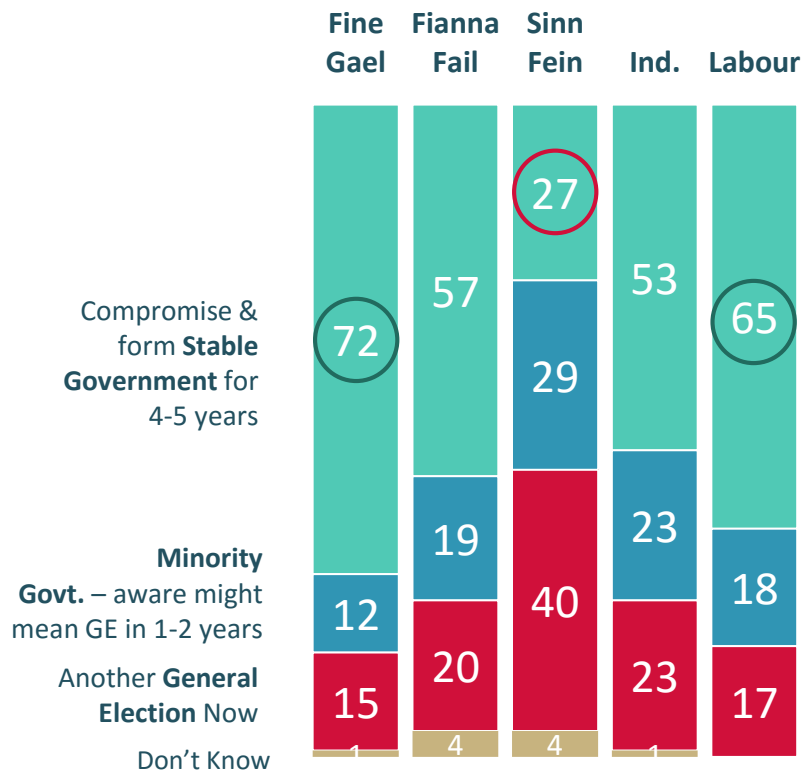
Hold **another general election** now to try and get a clearer picture



Parties as they were elected, compromise and form a **stable government** that will last 4-5 years

Minority government to at least get us through the rest of the year, but aware that another general election may happen in the first 1-2 years

Preference x Party Support at General Election 2016



Level of Content in Own Vote at General Election 2016

Now that the election is over and the votes have been counted, can you please choose which of these statements best describes how you feel about your own choice of candidate?

(Base: All Adults 18+ Who Voted - 929)

